

MAXIMATOR®

Maximum Pressure.

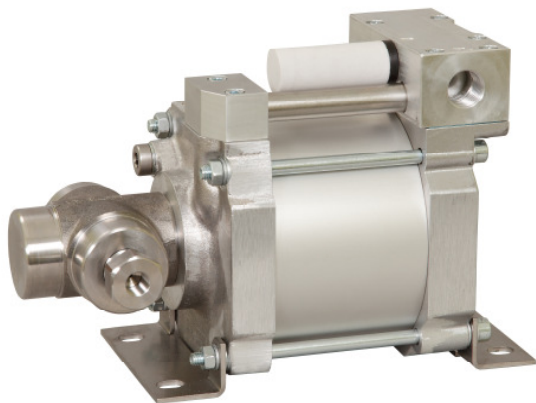


High Pressure Technology • Testing Equipment
Hydraulics • Pneumatics

Technical Data Sheet

S40 SS

» Water service



S40-SS
single acting, single air drive head

Technical Data:

Air drive pressure:	1-10 bar / 14,5 - 145psi
Calculated Outlet Pressure at an air drive of 10 bar/145 psi:	390 bar / 5,650 psi
Pressure ratio:	1:39
Displacement volume/double stroke	12,6 cm ³ / 0.76 cu.inch

Connections:

Inlet:	3/8" BSP
Outlet:	3/8" BSP
Air drive:	1/2" BSP
Maximum operating temperature:	60°C
Net weight:	7 kg

Pressure and flow performances, please see enclosed graph.

Wetted materials of construction:

Top cap:	Aluminium
Air cylinder:	Aluminium
Seal package:	UHMWPE, FKM
Pump Body:	1.4313
HP Piston:	1.4112 (hardened)

Approximate Dimensions:

Height:	272 mm
Depth:	179 mm
Width:	135 mm

Available Accessories:

Air control units with filter pressure regulator, control pressure gauge and shut off valve:	S40-SS with C1.5
To protect the pump against excessive outlet pressures or to limit the outlet pressure, a safety valve can be fitted to the air control unit in the air drive line:	S40-SS with C1.5/SVair (The required outlet pressure has to be indicated.)

Please consult factory for more information. All technical and dimensional information subject to change. All General Terms and Conditions of sale, including limitations of our liability, apply to all products and services sold.

Leistungsdiagramm/Performance Graph S 40 SS

Prüfflüssigkeit/Test Liquid: Wasser-Öl-Emulsion/Water Oil Emulsion ca. 1 - 10 cst

Werte berechnet/ calculated values

